

RFID Installation

Each RFID tag is assigned to a specific vehicle. Please ensure that you are installing the correct tag on the correct vehicle. The last 4 digits of the RFID number are displayed on the tag.

RFID tags must be installed on the passenger side headlamp or windshield of the vehicle in a **vertical** position (pictures 1-5). If they are placed in any other position besides vertical they may not work as well or possibly not at all. The further forward the RFID tag is on the vehicle the faster it works, so the passenger side headlight is the preferred location. If it is not possible to install the RFID tag on the headlight, then it should be installed as low on the passenger side windshield as possible in an area that does not interfere with the windshield wiper path (pictures 6 & 7). Note: If the tag is mounted to the windshield you will need to be closer to the receiver before it activates the gate to open.

Removal: The glue holding the tag can be removed from the surface with rubbing alcohol or an adhesive remover. Once the RFID is removed, it will break the antenna connection and it cannot be re-used.

If you incorrectly install the RFID, or break it, you will need to order a replacement. Replacements are not free even if your original RFID was.

1. Clean the surface with a vinegar or ammonia based cleaner like Windex. The surface must be clean and not have a wax or oily buildup on the surface.
2. Align the RFID with the body line (the seam between the hood and passenger side fender) of your vehicle. Use the seam as a guide to mount the RFID tag facing forward, otherwise use the lower passenger side windshield corner as your reference point.
3. Place the RFID in a vertical position on the passenger side headlamp that is closest to the body line. The RFID is so thin that it will not interfere with the light from the headlamp. You can move the RFID left or right of the body line for aesthetics as long as it stays vertical. DO NOT place the RFID on the side of the headlamp or on painted surfaces. The RFID must face forward in order to be read.
4. Carefully peel the backing from the RFID being careful not to bend the RFID in the process.
5. Place the RFID on the headlamp and use your finger to rub all areas of the RFID to ensure that it has fully adhered to the headlamp.

Examples of correctly installed RFIDs are on the back side of these instructions.

Headlamp Installations:



Picture 1



Picture 2



Picture 3

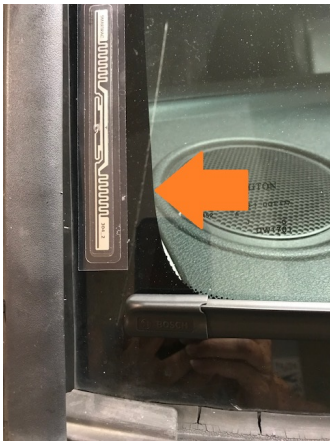


Picture 4



Picture 5

Windshield Installation:



Picture 6



Picture 7